

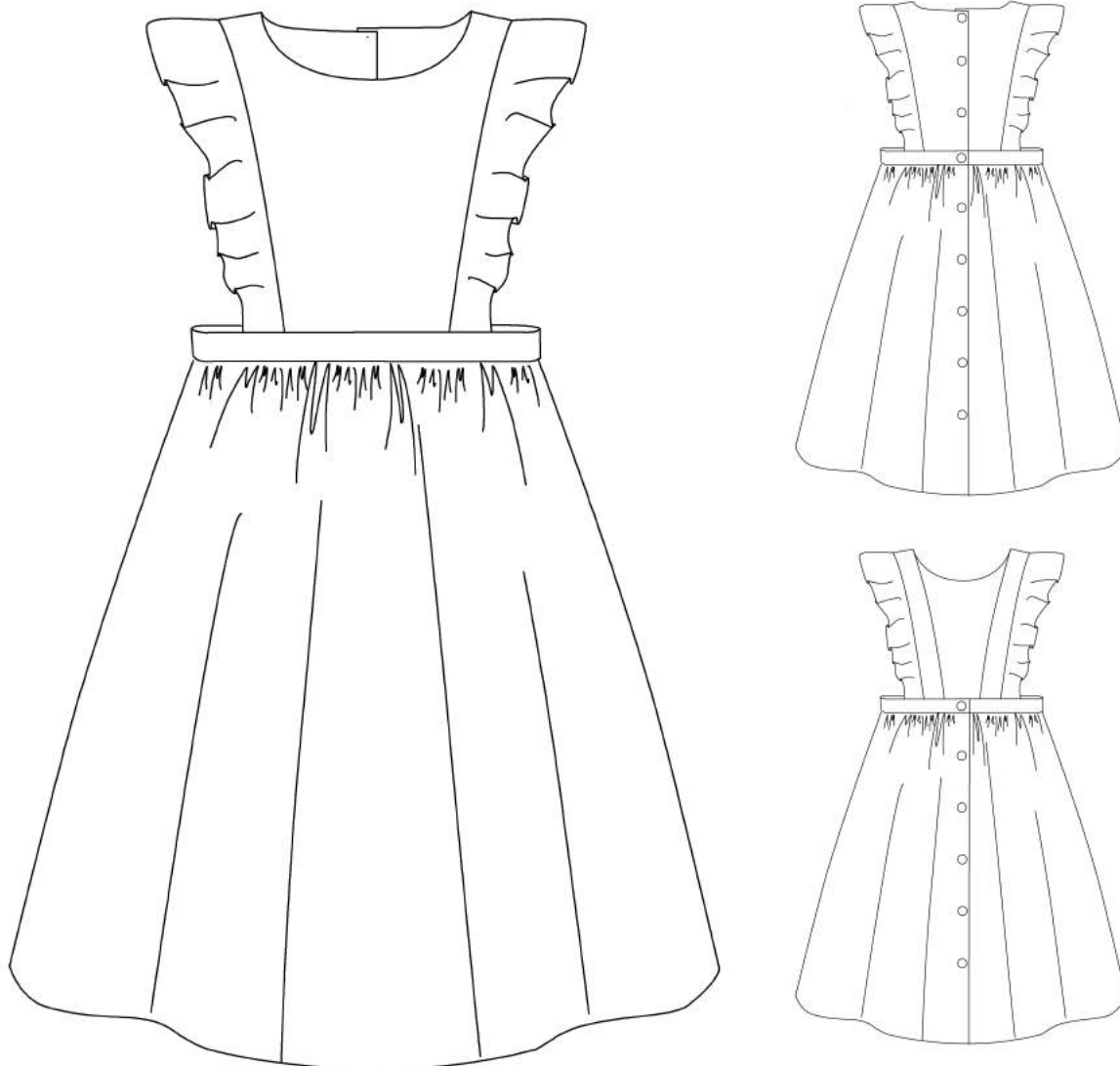


COLOMBINE
Maxi dress with ruffles



Maxi dress with ruffled straps or full back
based on the Colombine pattern

Sizes 2, 3, 4, 6, 8 and 10



FOREWORD

In order to sew this version of Colombine, you must own the original pattern: <http://papillonetmandarine.bigcartel.com/product/patron-colombine>.

FABRIC REQUIREMENT AND NOTIONS

	2 Y	3 Y	4 Y	6 Y	8 Y	10 Y
Fabric (width 140 cm)	100 cm	100 cm	150 cm	160 cm	180 cm	200 cm
Number of 15-18 mm buttons	7	7	8	8	9	10
- Full back	4	4	5	5	6	7
- Straps						

The fabric used on the cover page is France Duval-Stalla's caraway Swiss muslin, <https://www.franceduvalstalla.com/fr/>

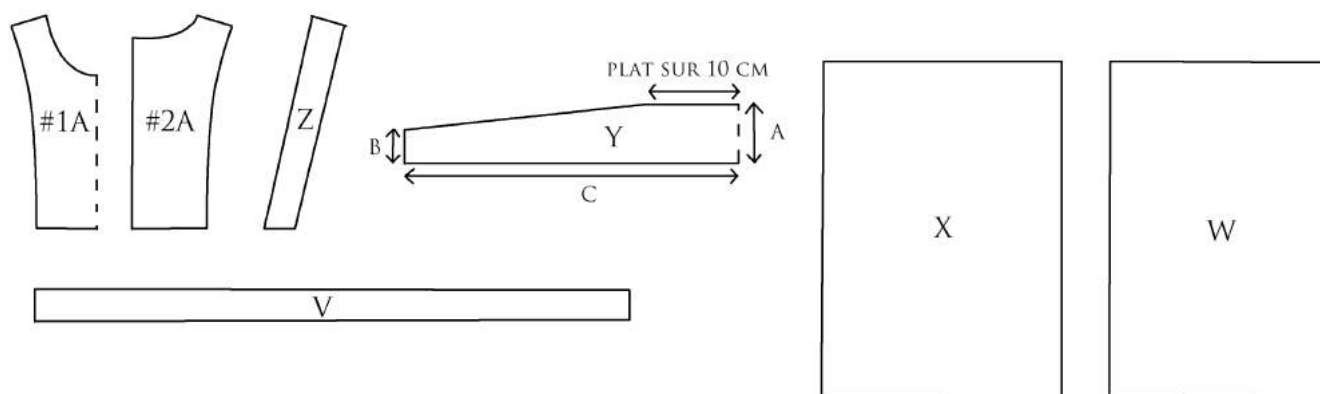
PATTERN PIECES

➤ **Full-back maxi dress :**

- Central Front Yoke #1A (same piece as in original pattern), cut two on fold of fabric
- Central Back Yoke #2A (same piece as in original pattern), cut four
- Sash V, cut two
- Front skirt W, cut one on fold of fabric
- Back Skirt X, cut two
- Ruffles Y, cut four on fold of fabric (with edge A against the fold)

➤ **Strap maxi dress :**

- Central Front Yoke #1A (same piece as in original pattern), cut two on fold of fabric
- Sash V, cut two
- Front skirt W, cut one on fold of fabric
- Back Skirt X, cut two
- Ruffles Y, cut four on fold of fabric (with edge A against the fold)
- Strap Z, cut four



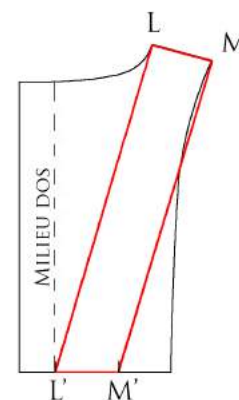
- Dimensions of pattern pieces V, W, X, and Y (seam allowances included)

	2 Y	3 Y	4 Y	6 Y	8 Y	10 Y
Sash V (cut 2s)	56 x 5 cm	58 x 5 cm	60 x 5 cm	62 x 6 cm	64 x 6 cm	66 x 6 cm
Front Skirt W (cut one on fold)	32 x 39 cm	33 x 42 cm	34 x 45 cm	35 x 53 cm	36 x 61 cm	37 x 69 cm
Back Skirt (cut 2)	34 x 39 cm	36 x 42 cm	38 x 45 cm	40 x 53 cm	42 x 61 cm	44 x 69 cm
Ruffles Y (cut 4)	A : 7,5 cm B : 4 cm C : 30 cm	A : 7,5 cm B : 4 cm C : 31 cm	A : 7,5 cm B : 4 cm C : 33 cm	A : 8,5 cm B : 5 cm C : 36 cm	A : 8,5 cm B : 5 cm C : 40 cm	A : 8,5 cm B : 5 cm C : 44 cm

- Drafting of the straps

Straps are drafted from the pattern piece #2A of the original COLOMBINE:

- Trace piece #2A on your tracing paper in the right size,
- Place a point L' where the center back line intersects the bottom,
- Starting from L', place a point M' with the distance L'M' being equal to the distance LM.
- Trace a line between L and L' and another line between M and M'.
- Join L to M and L' to M'.



The pattern piece for the strap is done!

Once your fabric is cut, carefully mark the top and the bottom of the straps to prevent any mistake afterwards.

NB: if you want to alter the width of the ruffles, you can alter either measure A or B of the Ruffle Y. If you want to lengthen or shorten the dress, you can alter the length of the Front and Back Skirts.

SEWING THE SLEEVELESS COLOMBINE✓ **Yoke**➤ Full-back pinafore dress :

With right sides together, pin each Center Front Yoke #1A to each of Center Back Yoke #2A at the shoulder. Stitch at 1cm from the edge and press the seams open..

→ You now have 2 Center Yokes, leave one aside.

➤ Strap pinafore dress :

With right sides together, pin each Center Front Yoke #1A to Strap Z at the shoulder. Stitch at 1cm and press the seams open.

→ You now have 2 Center Yokes, leave one aside.

✓ **Ruffles**

- With right sides together, pin Ruffle 7 by pair. Stitch the curved edge at 1cm (i.e. edge facing C). Turn on the right side and press.

→ You now have two lined ruffles.

- Gather, the straight long edge C of each ruffle (*cf the original COLOMBINE pattern for the gathering technique*).

✓ **Finishing the yoke**

- With right sides together, pin the gathered edge of each ruffle on either side of the main yoke (*Front and Back Yokes for the full-back version; Front Yoke and Straps for the strap version*). Distribute the gathers evenly and stitch in place at 0.75cm from the edge.

- Unpick the gathering stitches.

- With right sides together, pin the yoke lining (*the yoke that was set apart*) to the main yoke matching Center Front/ Center Back/ Shoulder. Ruffles are then sandwiched in-between.

- Stitch the side seams first at 1cm (*i.e. along the edges where ruffles are sewn*)

- Then stitch the neckline and the center back at 1cm (*center back opening for the full-back version, inner side of the straps for the strap version*). Do not catch the ruffles while sewing.

Caution: this is a rather tricky step since ruffles MUST NOT be sewn over. You can push them aside if necessary while sewing the back.

- Clip the neckline and the corners too for the full-back version.

- Turn the bodice on the right side and press.

✓ **Sewing the outer sash**

With right sides together, pin one of the sashes V (*will be designated as the 'outer sash' afterwards*) to the bottom of the bodice as follow (NB: the ends of the ruffles will be sewn during the process) :

→ Front, for both versions: match the center front of the bodice to the center of the sash (i.e. mid-length of the sash). Stitch the bottom of the Front Yoke and the ruffles at 0.75cm.

→ Back, for the full-back version only: the sash is 1cm-longer on each side of the back. Stitch the bottoms of the yokes and the ruffles at 0.75cm.

→ Back, for the strap version only: the edge of each strap is placed at 3cm from the end of the sash. Stitch the bottom of the straps and the ruffles at 0.75cm.

Caution: Take great care in placing the back yokes after having sewn the front yoke to the sash or you will end up with a twisted bodice once turned on the right side.

✓ **Sewing the skirt**

- With right sides together, pin the Back Skirt X to the Front Skirt W at the side seams. Stitch at 1cm. Overcast the seam allowances together and press the seams towards the back.

- Time for the button plackets: turn 1cm on the wrong side along the back opening on each Back Skirt. Fold 2cm on the wrong side again and edgestitch the folds in place.

- Gather the top of the skirt (*front and back*) between the button plackets.

✓ Sewing the inner sash

- With right sides together, pin the gathered edge of the skirt to the bottom of the outer sash matching the center fronts. Distribute the gathers evenly along the outer sash.
- Stitch at 1cm. Unpick the gathering stitches then press the seam allowance towards the inside of the sash.
- With right sides together, pin the remaining sash V (i.e. the 'inner sash') to the outer sash, sandwiching the bodice in the process. Stitch along the ends and the top edge of the sash at 1cm.
- Clip the corners of the sash and turn everything on the right side, the sashes being now wrong sides together. Press well to get sharp corners.
- Turn 1cm on the wrong side of the bottom of the inner sash and align this fold along the seam between the outer sash and the skirt. Handstitch the fold or sew through all the layers with your sewing machine.

✓ Hemming the dress

- Hem the dress by folding 1cm up first to the wrong side and then fold up another 2cm. Stitch as close to the edge as possible, sewing through all the layers.

✓ Buttons and buttonholes

- Sew your buttonholes on the left back (when the dress is back side up), they are evenly spaced every 6 to 8cm:
 - Full-back version: 3 buttonholes on the back yoke, 1 on the sash and the rest distributed on the button placket,
 - Strap version: 1 buttonhole on the sash and the rest distributed on the button placket,
- Sew the buttons on the opposite side.

Voilà ! So, do you like it?!

